

ASSEMBLY INSTRUCTIONS

Double Sided Platinum Class Pullup Banner

Assembly Checklist & Instructions

ENSURE YOU HAVE ALL PARTS

- 1 x Bag
- 1 x Back Pole
- 1 x Base with 2 x prints inside



FOLLOW ASSEMBLY INSTRUCTIONS BELOW

Estimated time: 5 minutes

STEP 1

Unzip the bag and remove the banner base



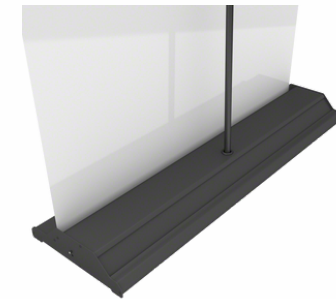
STEP 2

Unfold the back pole & assemble



STEP 3

Insert the pole into the base through the hole.



STEP 4

Slowly pull the print up & out of the base until it reaches the top of the pole



STEP 5

Place the hook at the top of the pole into the top bar. Repeat on the second side.



CONGRATULATIONS

Your banner is ready to go!

