

## Setting up your rectangle flag

1

When you first receive your rectangle flag, you must ensure that you have received all the parts necessary which include:

- 1 x carry bag
- 3 x straight pole sets (of all different lengths)
- 1 x right angled pole
- 1 x fabric flag
- Chosen ground base



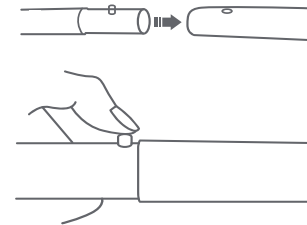
2

Open the top pocket of the fabric flag and slide through the shortest pole available in your kit.



3

Once the top has been pushed through the top bar, assemble the corner post to the top post and also slide through the side flag pocket as per Image (2). Make sure that all the push buttons are through and into the holes, making sure they are all clicking in place and secured.



4

Now that you have all the tubes and fabric flag assembled, you are ready to mount your flag onto your chosen base. Simply slide your base fitting and your flag is ready!



5

Your flag package is now assembled.

Enjoy using your flag.

Do read the "Caring for your rectangle flag" to learn how to get the most out of your flag over time.



6

## Caring for your Rectangle Flag

### Cleaning

If your rectangle flag is starting to get dusty or dirty, you can wash simply put it in the washing machine on a cold wash with half the detergent you would normally use and some fabric softener. Do no tumble dry, simply hang it up on the cloth line and wait for it to be completely dry before packing it up to avoid any mildew or damage.

### Maintenance

Flags are generally subjected to the environment and its elements. Ultraviolet rays and high winds cause the breakdown of the fibres in the flags, particularly the sewn edges at the extremities. The pigment in the inks used also tend to breakdown, making your flags fade over time... Prevailing condition will largely determine the length of the life of your flags. A flag in extreme conditions will not last as long as a flag flown in tempered environments. If you wish to preserve your flag, it should be anchored using one of our accessories with swivel bases and should be brought in when strong winds are predicted. Warranty does not cover breakage of pole sets during heavy winds. Life of a flag also depends on its flying time. A flag that is used 24 hours a day will definitely not last as long as a fly that is used casually! Flags in general can be expected to last between 6 to 12 months.